

ALWAYS REMEMBER:

SASH is the acronym used when giving any medication through an IV. The letters stand for:



SALINE
(white cap) flush



**ADMINISTER
MEDICATION**



SALINE
(white cap) flush



HEPARIN
(blue or yellow cap) flush

The amounts differ for pediatrics and adult patients:

| PEDIATRIC (up to 10 years) |
|---|
| Saline flush 3–5mls |
| Administer medication |
| Saline flush 3–5mls |
| Heparin flush 1–3mls |
| If you have more than one lumen, flush each UNUSED lumen once daily with: Saline 3–5mls, then Heparin 1–3mls |

| ADULT (over 10 years) |
|--|
| Saline flush 5–10mls |
| Administer medication |
| Saline flush 5–10mls |
| Heparin flush 3–5mls |
| If you have more than one lumen, flush each UNUSED lumen once daily with: Saline 5–10mls, then Heparin 3–5mls |

TIPS FOR GIVING MEDICATION

- Don't force the flush or medication. Apply gentle pressure with thumb. If it doesn't flush, rotate your arm at the shoulder, cough deeply, and try again.
- Ensure all clamps are open.
- Clean the IV-line connector with an alcohol pad for 15 seconds, and let it dry for 30 seconds before use.
- When flushing with saline or heparin, stop pushing the plunger at the last small lines.

YOUR HOME HEALTH PROVIDER IS:

HOME HEALTH PROVIDER PHONE:

CALL 911 IF YOU EXPERIENCE BREATHING DIFFICULTIES OR CHEST PAIN!

WHEN TO CALL NURSING (YOUR HOME HEALTH PROVIDER)

- If you start experiencing pain, redness, swelling, numbness, or tingling in the arm of the catheter
- Unable to flush catheter
- Leaking or bleeding from insertion site
- If you develop skin rash, hives, swelling of the lips, tongue, or face

WHEN TO CALL PHARMACY (US)

- If you need medication
- If you need supplies
- If you have a pump and it is not working
- If you have questions regarding your medication

Call us at:
(832) 612-3500

HealthQuest Infusion & Specialty


1311 W Sam Houston Pkwy N, Ste 100 Houston, TX 77043

Visit us at facebook.com/myhqrx

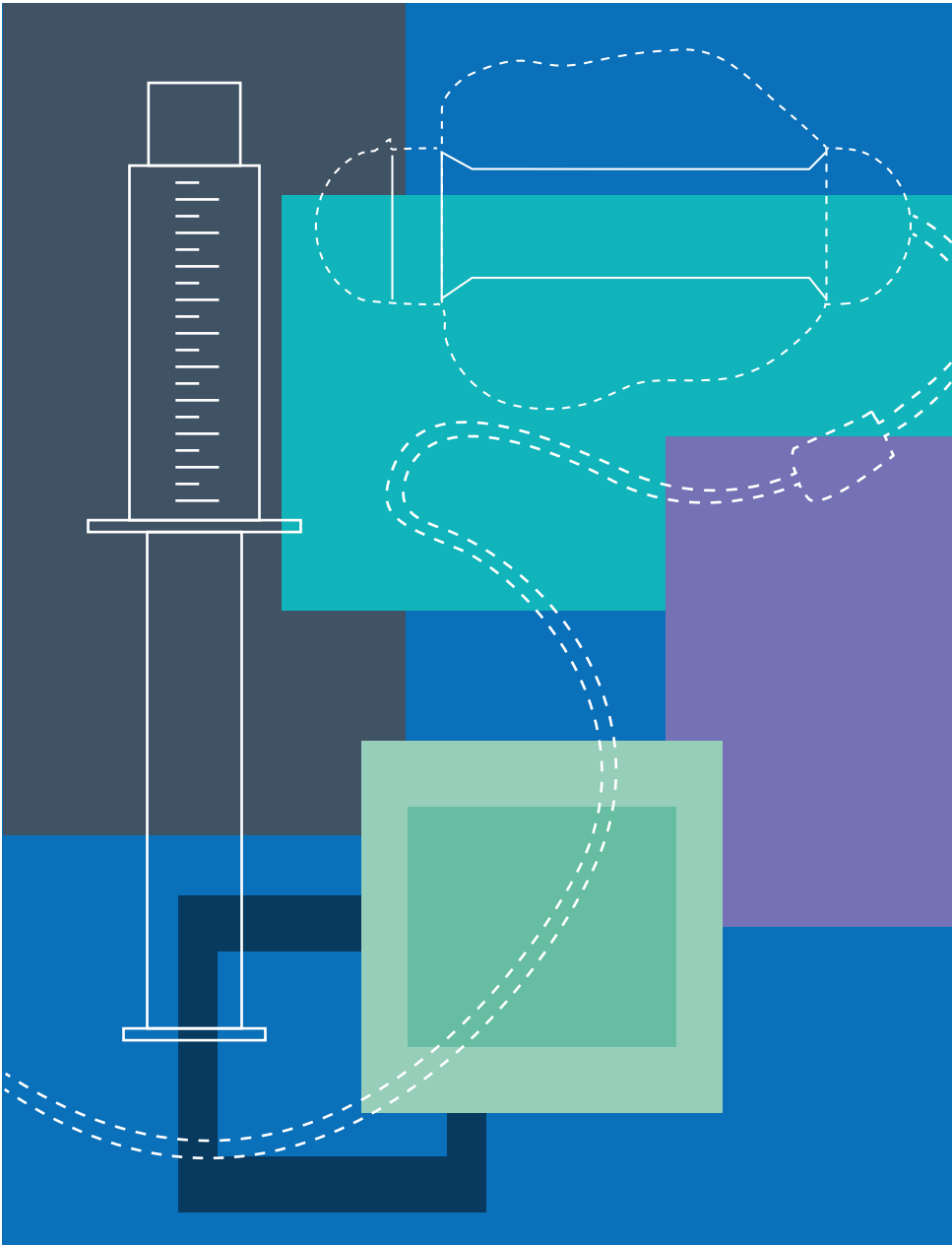
HQRx.com

©2024 HealthQuest Therapeutics

HealthQuest
Infusion & Specialty

 We support
our Veterans

QUICKSTART GUIDE
TO YOUR IV THERAPY



HQRX-SASHTRL_081924